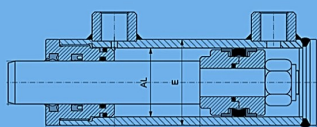


PROGETTAZIONE E PRODUZIONE DI:

CILINDRI OLEODINAMICI HYDRAULIC CYLINDERS

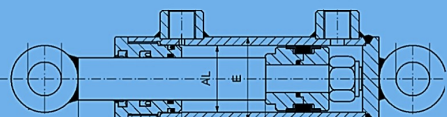




DF

Cilindro base
Base Cylinder

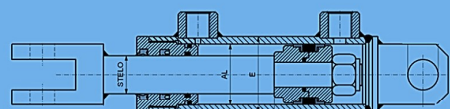
1



DFOO

Doppio occhio
Double eye

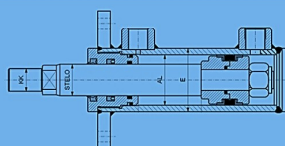
2



DFPF

Perno e Forcella
Pin and Fork

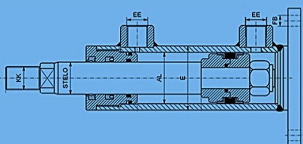
3



DFFT

Flangia Tonda Ant.
Front Round flange

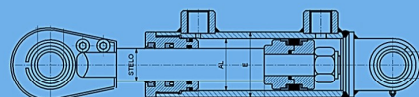
4



DFFTP

Flangia Tonda Post.
Rear Round flange

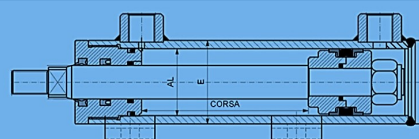
5



DFSS

Doppio snodo
Double Joint

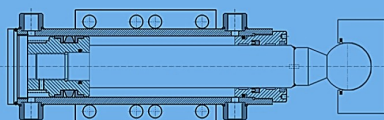
6



DFPI

ancoraggio piedini
feet mounting

7



DFZZ

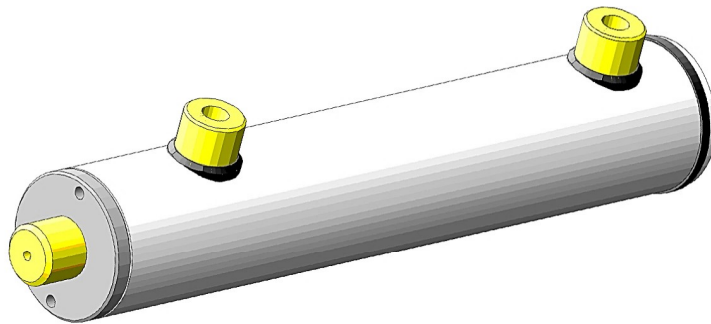
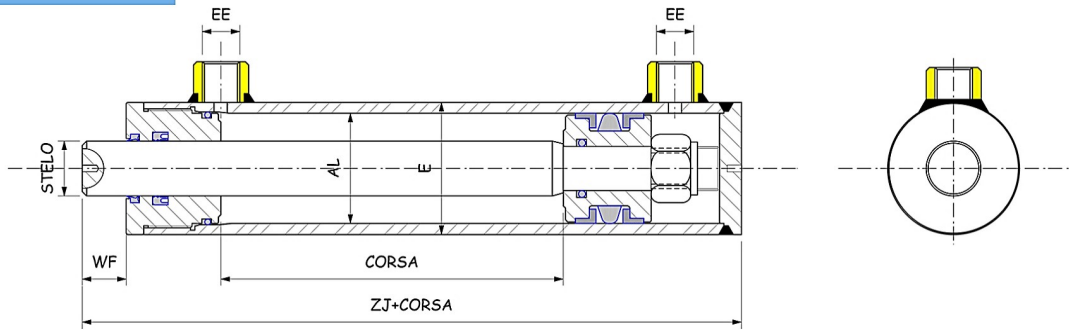
Stabilizzatore
Stabilizer

8

esecuzioni speciali a richiesta / custom mountings on request

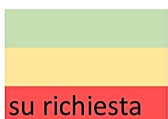
DF

CILINDRO OLEODINAMICO SALDATO - DOPPIO EFFETTO
 HYDRAULIC WELDED CYLINDER - DOUBLE ACTING



MAX PRESSURE
180 BAR

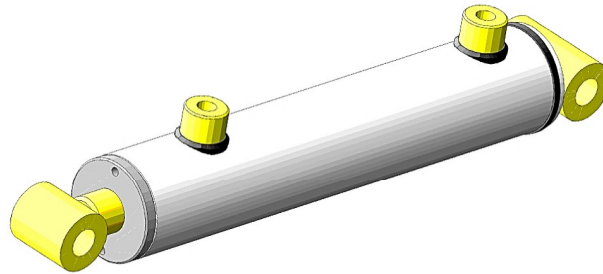
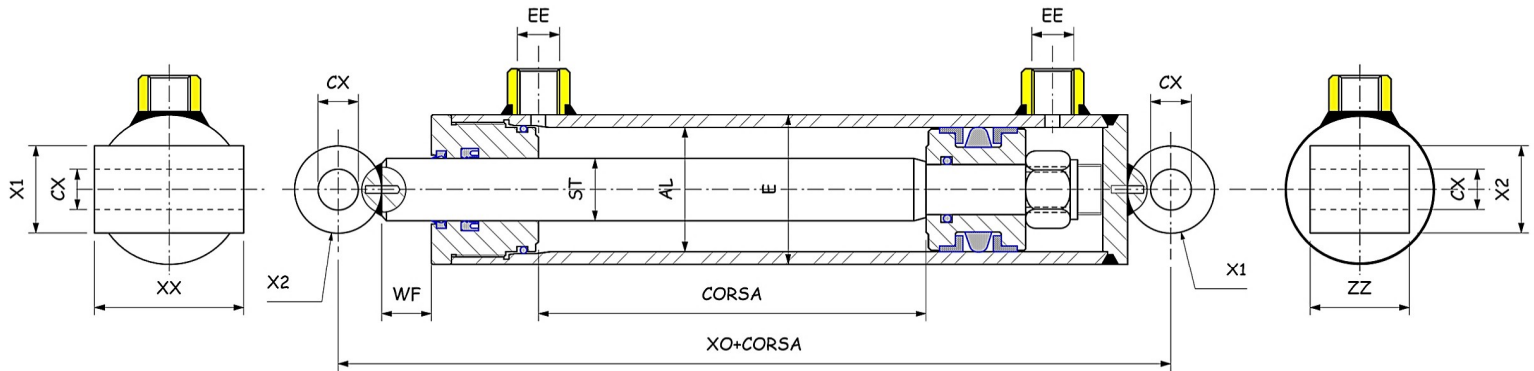
ØE	ØAL	ØST	CORSA/STROKE	EE	WF	ZJ+CORSA	Tempistiche
35	25	16		1/4"	16	105	su richiesta
40	30	16/20		1/4"	16	105	
42	32	16/18/20		1/4"	16	105	su richiesta
50	40	20/25		1/4"	22	130	
50	40	22/28		1/4"	22	130	su richiesta
55	45	20/25		3/8"	22	140	su richiesta
60	50	20/25/30/35		3/8"	22	140	
60	50	22/28/36		3/8"	23	140	su richiesta
65	55	25/30/35		3/8"	23	160	su richiesta
70	60	30/35/40		3/8"	23	160	
70	60	32/36		3/8"	23	160	su richiesta
75	63/65	30/35/40		3/8"	23	160	
80/85	70	30/35/40/45/50		3/8"	23	160	
85	75	30/35/40/45		3/8"	23	160	su richiesta
95	80	40/50		3/8"	23	160	
95	80	35/45/60		3/8"	23	160	su richiesta
95	85	35/40/45/50		1/2"	25	180	su richiesta
100/105	90	40/45/55		1/2"	23	186	su richiesta
100/105	90	50/60		1/2"	23	186	
115/120	100	50/55/60		1/2"	25	210	
115/120	100	40/45/56/70		1/2"	25	210	su richiesta
130	110	50/60		1/2"	25	220	su richiesta
140	120	60/70		1/2"	25	220	su richiesta
150	130	60/70/80		1/2"	25	235	su richiesta



15-20 giorni
 20-25 giorni / se disponibile
 6-7 settimane

DFOO

CILINDRO OLEODINAMICO SALDATO - DOPPIO EFFETTO
 HYDRAULIC WELDED CYLINDER - DOUBLE ACTING



ØE	ØAL	ØST	CORSA	EE	CX	ZZ	WF	X1/X2	XO+CORSA
42	32	20		1/4"	16,25	30	16	35	140
50	40	25		1/4"	16,25	30	22	35	165
50	40	30		1/4"	16,25	30	22	35	165
60	50	30		3/8"	20,25	40	22	40	180
60	50	35		3/8"	20,25	40	22	40	180
70	60	35		3/8"	25,25	50	23	50	210
70	60	40		3/8"	25,25	50	23	50	210
73	63	40		3/8"	25,25	50	23	50	210
80	70	35		3/8"	25,25	50	23	50	210
80	70	40		3/8"	25,25	60	23	50	210
92	80	40		1/2"	30,25	60	25	60	240
92	80	50		1/2"	30,25	70	25	60	240
105	90	50		1/2"	40,25	70	23	70	256
115	100	50		1/2"	40,25	70	25	70	280
115	100	60		1/2"	40,25	70	25	70	280

PRESSIONE MASSIMA DI LAVORO 160 BAR /
MAX WORKING PRESSURE: 160 Bar

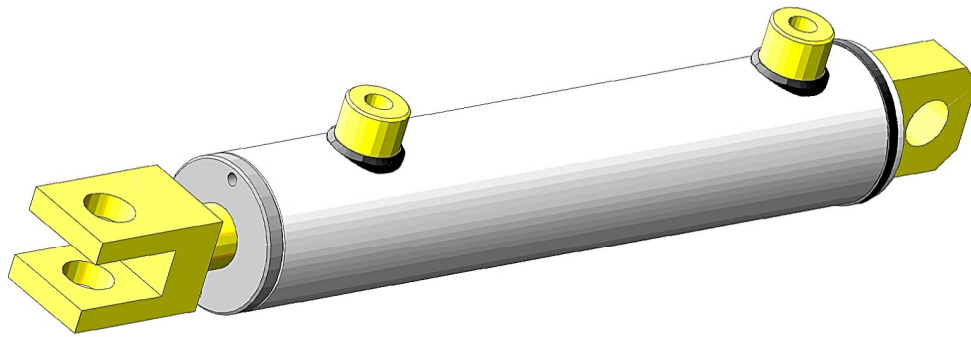
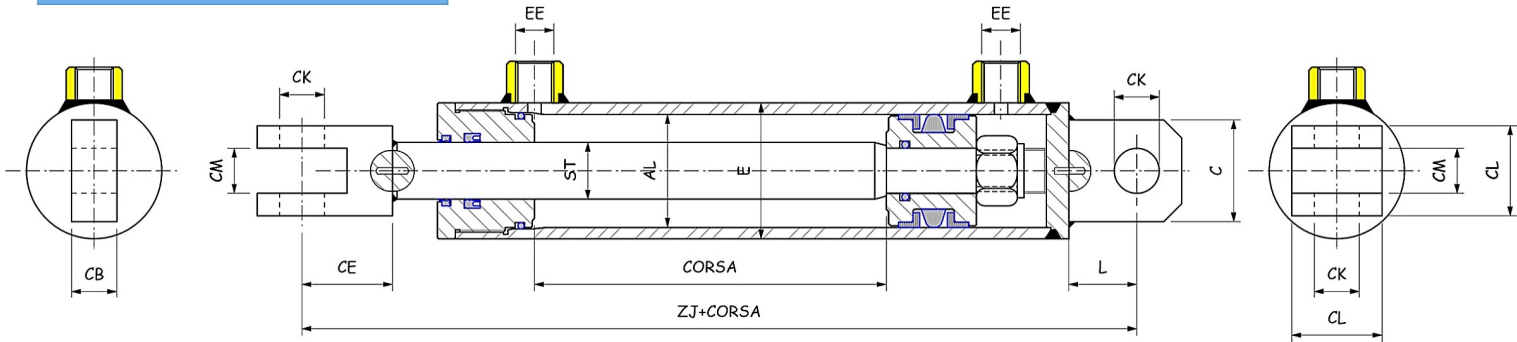
CODICE ORDINAZIONE:
 ORDERING CODE:

DFOO.AL.ST.CORSA
 DFOO.AL.ST.STROKE

ESEMPIO: DFOO.050.030.0250
 EXAMPLE: DFOO.050.030.0250

DFPF

CILINDRO OLEODINAMICO SALDATO - DOPPIO EFFETTO HYDRAULIC WELDED CYLINDER - DOUBLE ACTING



ØE	ØAL	ØST	CORSA	EE	CK	CL	CM	CE	C	L	ZJ + CORSA
42	32	20		1/4"	16,2	35	16	34	35	25	164
50	40	25		1/4"	16,2	35	16	34	35	25	189
50	40	30		1/4"	16,2	35	16	34	35	25	189
60	50	30		3/8"	20,25	40	20	40	45	30	210
60	50	35		3/8"	20,25	40	20	40	45	30	210
70	60	35		3/8"	25,25	50	25	45	50	35	240
70	60	40		3/8"	25,25	50	25	45	50	35	240
73	63	40		3/8"	25,25	50	25	45	50	35	240
80	70	35		3/8"	25,25	50	25	45	50	35	240
80	70	40		3/8"	25,25	50	25	45	50	35	240
92	80	40		1/2"	30,25	60	30	50	60	45	275
92	80	50		1/2"	30,25	60	30	50	60	45	275
105	90	50		1/2"	40,25	60	40	70	70	60	316
115	100	50		1/2"	40,25	80	40	70	70	60	340
115	100	60		1/2"	40,25	80	40	70	70	60	340

PRESSIONE MASSIMA DI LAVORO 160 BAR /
MAX WORKING PRESSURE: 160 Bar

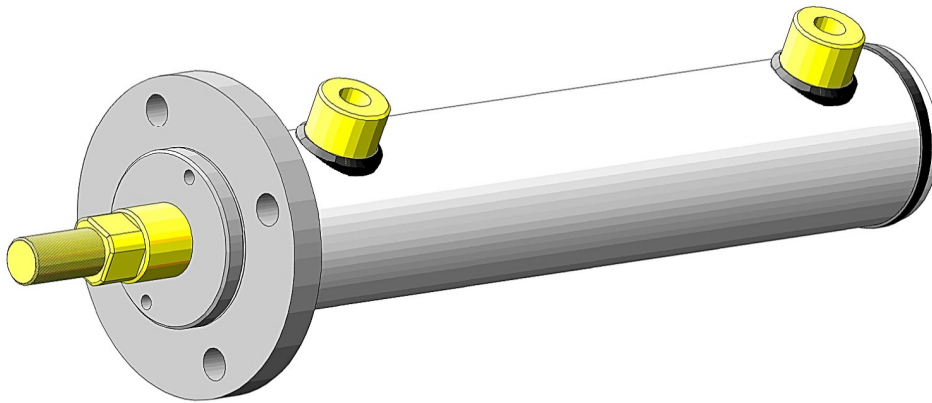
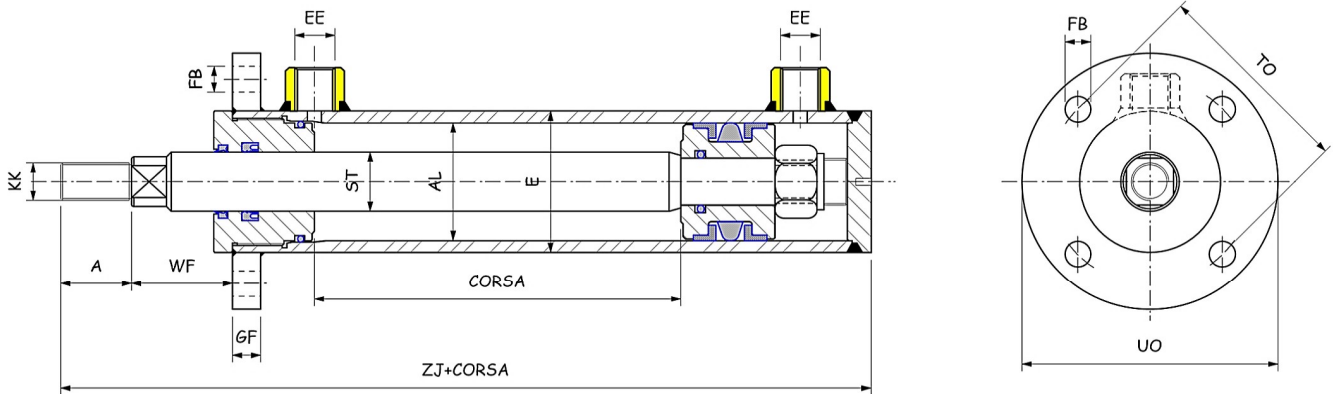
CODICE ORDINAZIONE:
ORDERING CODE:

DFPF.AL.ST.CORSA
DFPF.AL.ST.STROKE

ESEMPIO: DFPF.050.030.0250
EXAMPLE: DFPF.050.030.0250

DFFT

CILINDRO OLEODINAMICO SALDATO - DOPPIO EFFETTO HYDRAULIC WELDED CYLINDER - DOUBLE ACTING



ØE	ØAL	ØST	CORSA	EE	KK	A	WF	FB	TO	GF	ZJ	UO
50	40	20		1/4"	M14*1,5	30	18	11	87	12	160	109
50	40	25		1/4"	M16*1,5	30	18	11	87	12	160	109
60	50	30		3/8"	M20*1,5	40	18	13	105	14	180	128
60	50	35		3/8"	M27*2	40	18	13	105	14	180	128
70	60	35		3/8"	M27*2	50	20	13	117	16	212	142
70	60	40		3/8"	M30*2	50	20	13	117	16	212	142
80	70	35		3/8"	M27*2	60	22	15	127	16	224	162
80	70	40		3/8"	M30*2	60	22	15	127	16	224	162
95	80	40		1/2"	M30*2	70	25	17	149	18	260	181
95	80	50		1/2"	M36*2	70	25	17	149	18	260	181
115	100	50		1/2"	M36*2	70	27	17	162	24	290	194
115	100	60		1/2"	M42*2	70	27	17	162	24	290	194

PRESSIONE MASSIMA DI LAVORO 160 BAR /
MAX WORKING PRESSURE: 160 Bar

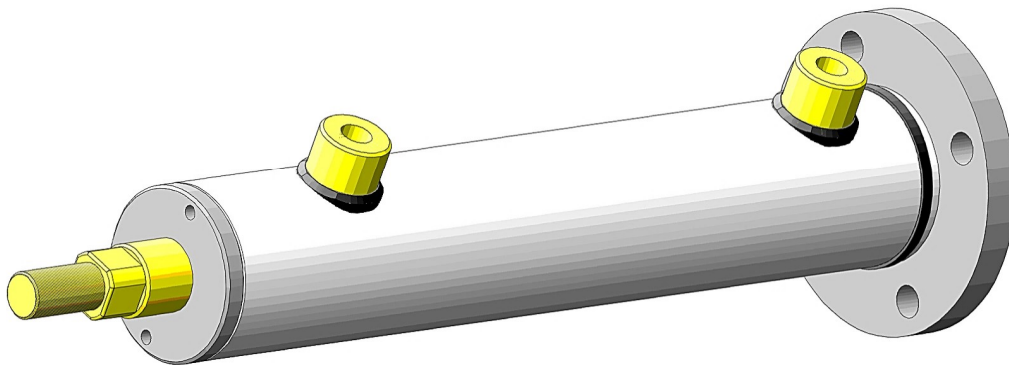
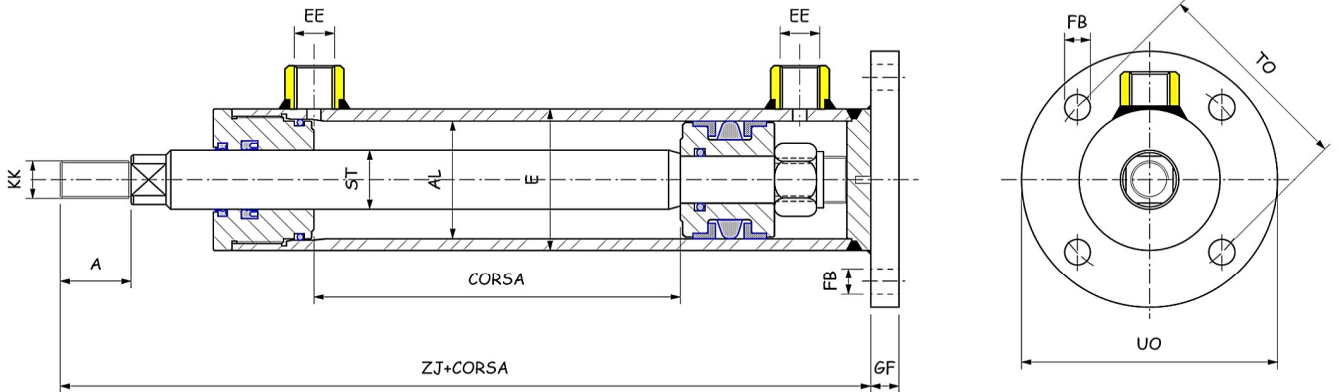
CODICE ORDINAZIONE:
ORDERING CODE:

DFFT.AL.ST.CORSA
DFFT.AL.ST.STROKE

ESEMPIO: DFFT.050.030.0250
EXAMPLE: DFFT.050.030.0250

DFFTP

CILINDRO OLEODINAMICO SALDATO - DOPPIO EFFETTO HYDRAULIC WELDED CYLINDER - DOUBLE ACTING



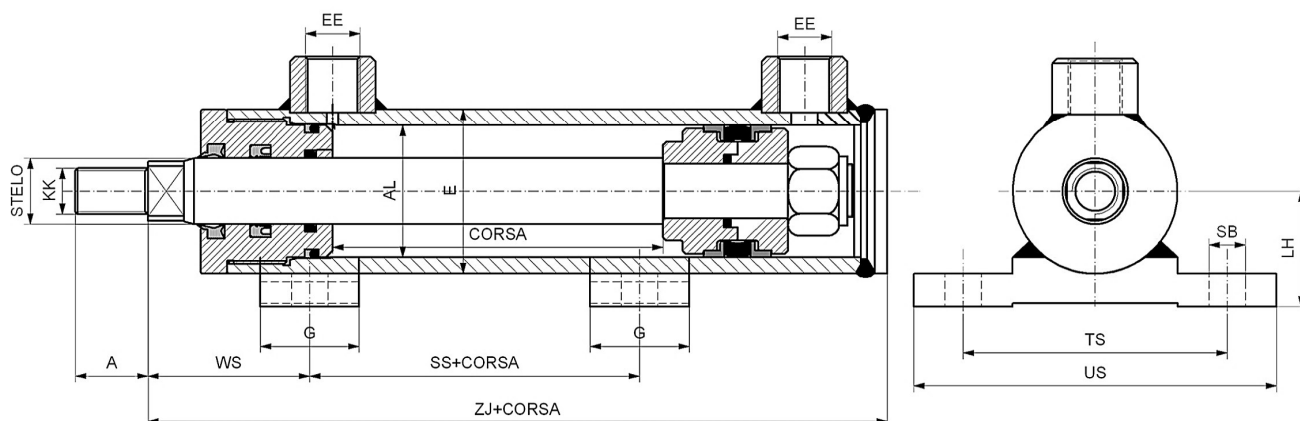
ØE	ØAL	ØST	CORSA	EE	KK	A	FB	TO	GF	ZJ	UO
50	40	20		1/4"	M14*1,5	30	11	87	12	175	109
50	40	25		1/4"	M16*1,5	30	11	87	12	175	109
60	50	30		3/8"	M20*1,5	40	13	105	14	195	128
60	50	35		3/8"	M27*2	40	13	105	14	195	128
70	60	35		3/8"	M27*2	50	13	117	16	215	142
70	60	40		3/8"	M30*2	50	13	117	16	215	142
80	70	35		3/8"	M27*2	60	15	127	16	230	162
80	70	40		3/8"	M30*2	60	15	127	16	230	162
95	80	40		1/2"	M30*2	70	17	149	18	270	181
95	80	50		1/2"	M36*2	70	17	149	18	270	181
115	100	50		1/2"	M36*2	70	17	162	24	300	194
115	100	60		1/2"	M42*2	70	17	162	24	300	194

PRESSIONE MASSIMA DI LAVORO 160 BAR /
MAX WORKING PRESSURE: 160 Bar

CODICE ORDINAZIONE:
ORDERING CODE:

DFFTP.AL.ST.CORSA
DFFTP.AL.ST.STROKE

ESEMPIO: DFFTP.050.030.0250
EXAMPLE: DFFTP.050.030.0250

DFPI**CILINDRO OLEODINAMICO SALDATO - DOPPIO EFFETTO**
HYDRAULIC WELDED CYLINDER - DOUBLE ACTING

ØE	ØAL	ØST	CORSA	EE	WS	G	SS + CORSA	ZJ + CORSA	TS	US	LH	SB	KK	A
55	40	20	1/4"	55	55	35	45+	135+	75	100	35	10,5	M14*1,5	30
55	40	25	1/4"	55	55	35	45+	135+	75	100	35	10,5	M16*1,5	30
65	50	30	3/8"	57	57	35	45+	135+	85	110	40	12,5	M20*1,5	40
65	50	35	3/8"	57	57	35	45+	135+	85	110	40	12,5	M27*2	40
75	60	35	3/8"	60	60	35	50+	157+	100	130	45	12,5	M27*2	50
75	60	40	3/8"	60	60	35	50+	157+	100	130	45	12,5	M30*2	50
85	70	35	3/8"	70	70	40	50+	190+	115	140	55	14,5	M27*2	60
85	70	40	3/8"	70	70	40	50+	190+	115	140	55	14,5	M30*2	60
95	80	40	1/2"	80	80	50	60+	190+	125	160	60	14,5	M30*2	70
95	80	50	1/2"	80	80	50	60+	190+	125	160	60	14,5	M36*2	70
115	100	50	1/2"	90	90	50	60+	200+	145	180	76	16,5	M36*2	70
115	100	60	1/2"	90	90	50	60+	200+	145	180	76	16,5	M42*2	70

CODICE ORDINAZIONE:
ORDERING CODE:

DFPI.AL.ST.CORSA
DFPI.AL.ST.STROKE

ESEMPIO: DFPI.060.040.0300
EXAMPLE: DFPI.060.040.0300

PRESSIONE MASSIMA DI LAVORO 160 BAR / MAX WORKING PRESSURE: 160 Bar

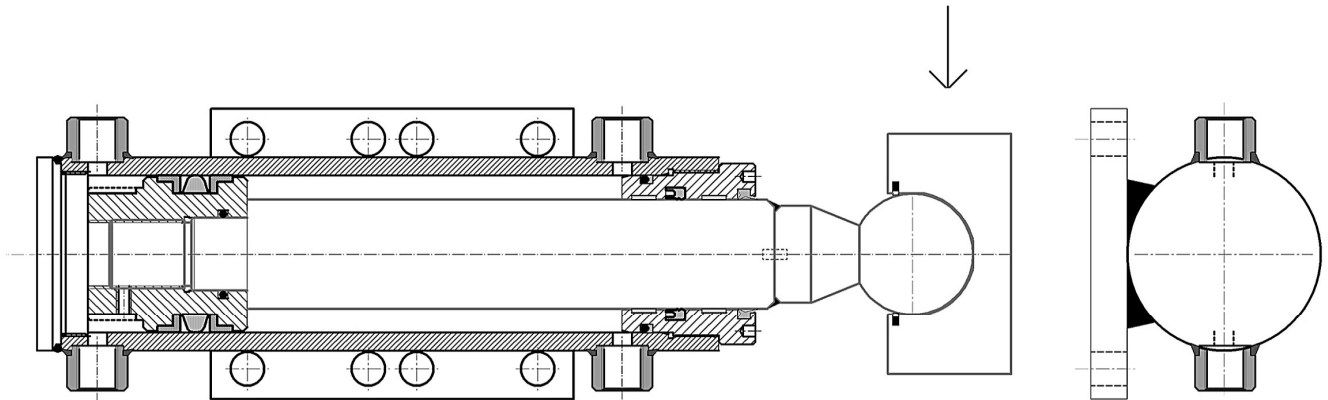
MATERIALI:
Bussola guida stelo: Ghisa G25
Stelo: Acciaio C45 Cromato
Tubo: Acciaio
Fondello: Acciaio
Saldatura MIG/MAG - TIG

MATERIALS:
Front head: Cast iron G25
Rod: Chromed Steel C45
Tube: Steel
Rear head: Steel
Weldings: MIG/MAG - TIG

DFZZ

CILINDRO OLEODINAMICO SALDATO - DOPPIO EFFETTO
HYDRAULIC WELDED CYLINDER - DOUBLE ACTING

GIUNTO AUTOSTABILIZZANTE
SELF-STABILIZING JOINT

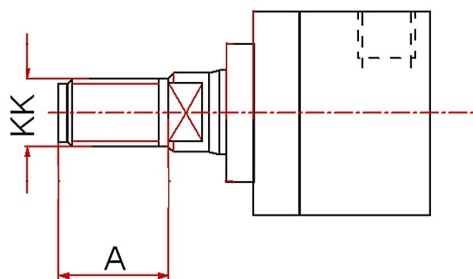


PRESSIONE MASSIMA DI LAVORO 200 BAR / MAX WORKING PRESSURE: 200 Bar

QUESTO CILINDRO IDRAULICO VIENE REALIZZATO SOLO SU RICHIESTA
THIS HYDRAULIC CYLINDER IS MANUFACTURED ON REQUEST

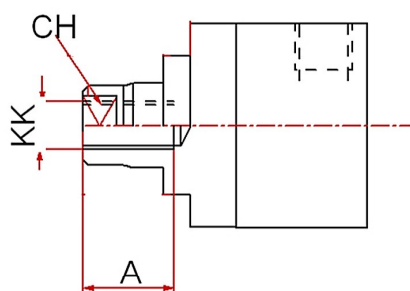
MATERIALI:
Bussola guida stelo: Ghisa G25
Stelo: Acciaio C45 Cromato
Tubo: Acciaio
Fondello: Acciaio
Saldatura MIG/MAG - TIG

MATERIALS:
Front head: Cast iron G25
Rod: Chromed Steel C45
Tube: Steel
Rear head: Steel
Weldings: MIG/MAG - TIG



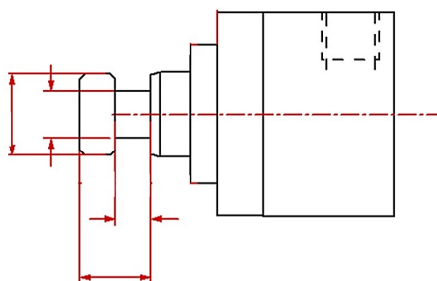
Filetto Maschio
Male Thread

Quote personalizzabili
Customizable quotes



Filetto femmina
Female Thread

Quote personalizzabili
Customizable quotes



Testa a martello
Hammer Head

Quote personalizzabili
Customizable quotes

Si possono effettuare modifiche alle rispettive quote delle nostre tabelle standard di tutti i nostri cilindri, salvo previa approvazione del nostro ufficio tecnico.

Changes can be made to the respective quotes of our standard tables of all our cylinders, after prior approval by our technical department.